



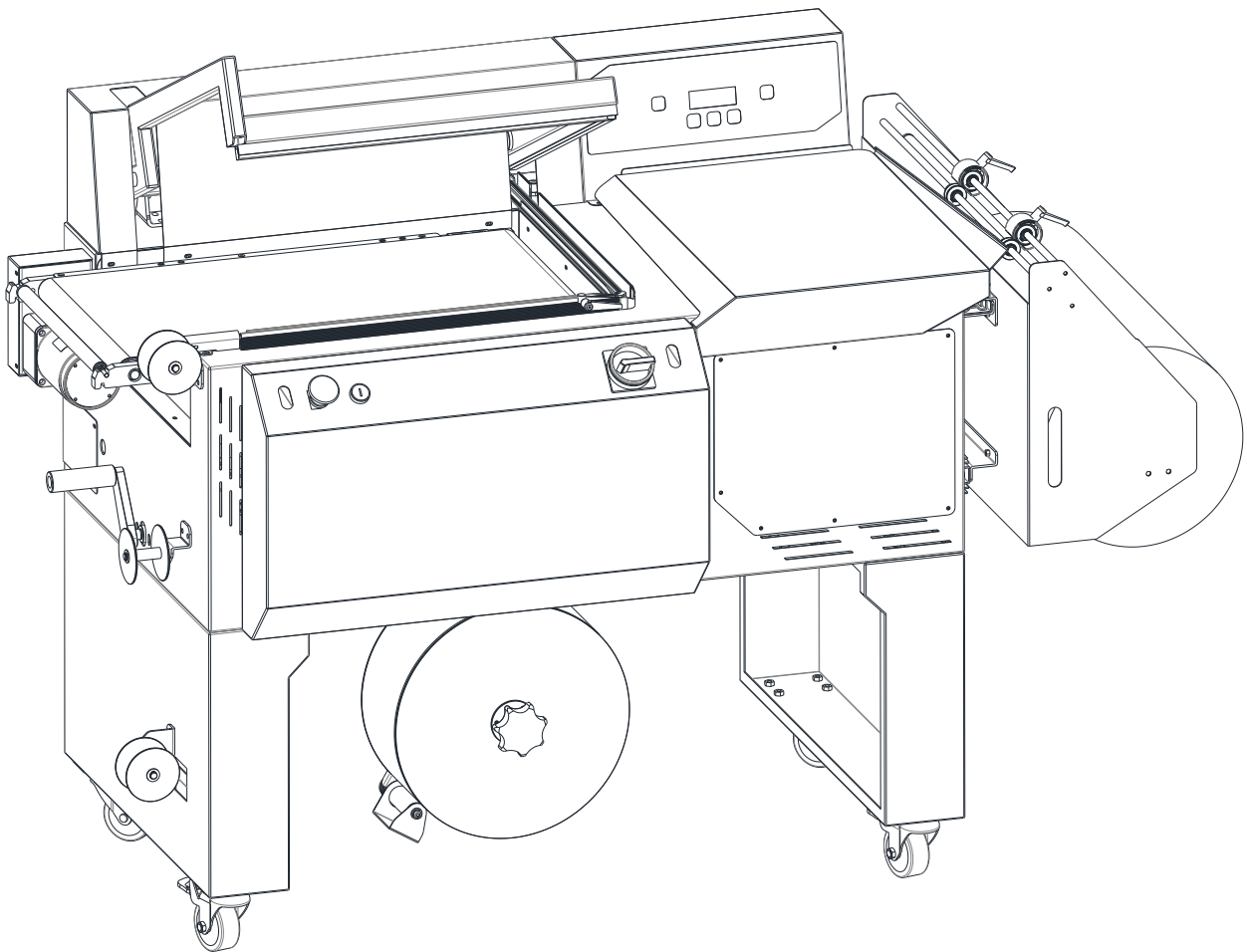
02 9452-3566

sales@getpacked.com.au

L-BAR SEALING MACHINE

Semi Auto Heat Sealer

MODEL: EKL-145E



OPERATION MANUAL

2023/12/11



1. GENERAL SAFETY INSTRUCTIONS	3
1.1 Basic Operation	3
1.2 Basic Safety Precautions	3
1.3 Safety Instructions Governing Specific Operational Phases	4
1.4 Warning of Electrical Dangers	5
1.5 Grounding Instructions Shall Include the Following	6
1.6 Before Operating.....	7
1.7 During Operation	7
1.8 After operating.....	7
1.9 Signs	8
2. MACHINE INFORMATION	9
2.1 Areas of Application	9
2.2 Environmental Information	9
2.3 Machine Description	10
2.4 Safety Devices	10
2.5 Technical Specification.....	12
2.6 Identification Data of the Machine	14
3. BEFORE OPERATING THE MACHINE	15
3.1 Shipping.....	15
3.2 Unload Machine from Pallet & Installation	15
3.3 Operation Space.....	16
3.4 Construction and Units	16
3.5 Operation Panel	17
3.6 Film Threading.....	18
4. OPERATING THE MACHINE.....	19
5. TROUBLE SHOOTING	21
6. MAINTENANCE	22
7. ELECTRIC WIRING DIAGRAM & PART.....	25
8. PART LIST	32

1. GENERAL SAFETY INSTRUCTIONS

1.1 Basic Operation

- The manual and the safety remarks are to be read before use. The operator manual should be kept with the machine at all times. Intervals for maintenance and inspections are to be adhered to.
- This machine was built with state of the art technology and rigid adherence to safety standards.
- Unless used properly, it can cause injury to operators or persons in close proximity to the machine. In addition, improper use can cause damage to the machine or property around the machine.

1.2 Basic Safety Precautions

- The user is to be instructed in all other generally applicable legal and other mandatory regulations relevant to accident prevention and environmental protection in addition to the operating instructions.
- For safety reasons, long hair must be tied back or otherwise secured, garments must be close fitting and no jewelry may be worn.



- Use protective equipment whenever required by circumstances or by law.
- Carefully observe all safety instructions and warnings attached to the machine and make sure that they are always complete and perfectly legible.
- Always make certain that persons being trained and instructed in working on or with the machine are permanently supervised by an experienced person.
- Work on the electrical system and equipment of the machine is only to be carried out by a skilled electrician or by persons under the supervision and guidance of a skilled electrician and in accordance with the rules and regulations of electrical engineering.

1.3 Safety Instructions Governing Specific Operational Phases

- Avoid any operation mode that might be unsafe.
- All necessary precautions to ensure that the machine is only used being in a safe and reliable state are to be taken. The machine is only to be operated if all protective and safety devices, including removable safety devices, emergency shut-off equipment, noise-protection elements and exhaust systems are in right place and fully functional.
- The machine is to be checked for damage and defects at least once per work shift. Any changes including the working behavior of the machine are to be reported to competent persons immediately. If necessary, the machine is to be stopped and locked immediately.
- In case of any malfunction the machine must be stopped and locked until the defect has been eliminated.
- Generally make sure that nobody is at risk before starting up the machine.
- All personnel that will be operating this machine should be thoroughly trained in all phases of operation and safety.
- Always tighten unscrewed connections after maintenance and repair.
- After completing maintenance and repair all safety devices removed for setting up or repairing the machine must be reinstalled and checked for functionality prior to putting the machine back into service.
- To minimize the environmental impact all consumables and replaced parts must be disposed of safely.
- Before starting the machine check that the accessories have been stowed away safely.
- Do not attempt any operation that may be a risk to the stability of the machine.

1.4 Warning of Electrical Danger:



- Immediately remove power to the machine in case of trouble in the electrical system.
- Replace a fuse with one with the same style and ratings; pay particular attention to matching the specified current.
- Any electrical work performed on the equipment must be conducted by a skilled electrician or under the supervision of a skilled electrician. All work must be observed good electrical engineering practice and follow safety rules and local wiring standards.
- Inspect the electrical equipment of the machine at regular intervals. Tighten any loose connections. Check wiring for scorch marks; replace scorched wiring and determine and correct the reason for the overheating.
- When working on live equipment, ensure that a second person is available to cut power in case of an emergency. When appropriate, secure the working area with safety tape and a warning sign. Use insulated tools for electrical work.
- Before working on high-voltage assemblies, turn off the power supply. Carefully discharge the supply cable and short-circuit any energy-storage components such as capacitors.
- If the equipment was moved, carefully refit and refasten all parts removed for transport before reapplying power.
- Before moving the machine, remember to disconnect the power cable.



02 9452-3566
sales@getpacked.com.au



EXTEND

Extend the partnership

1.5 Grounding Instructions Shall Include the Following

- This product must be grounded. In the event of an electrical short circuit, grounding reduces the risk of electric shock. This product is equipped with a cord that has a grounding wire and an appropriate grounding plug. The plug must be plugged into an outlet that is properly installed and grounded in accordance with all local codes and ordinances.
- If repair or replacement of the cord or plug is necessary, connect the ground wire to the ground terminal of the plug. The wire with green insulation (with or without yellow stripes) is the grounding wire.
- Check with a qualified electrician or service person if the grounding instructions are not clear or if in doubt about the proper grounding of the machine. Do not modify the plug provided; if it will not fit the power outlet, have the proper outlet installed by a qualified electrician.
- This product is designed for use on a nominal AC circuit and has a grounding plug.

DANGER!

Improper installation of the grounding can result in electrocution.



02 9452-3566
sales@getpacked.com.au



EXTEND

Extend the partnership

1.6 Before Operating

- Verify that the power line voltage is correct.
- The machine must be properly grounded to avoid a shock hazard. All wiring must be in accordance with local wiring standards.
- The L-bar seal machine can only be operated with PVC or POF film.





1.7 During Operation

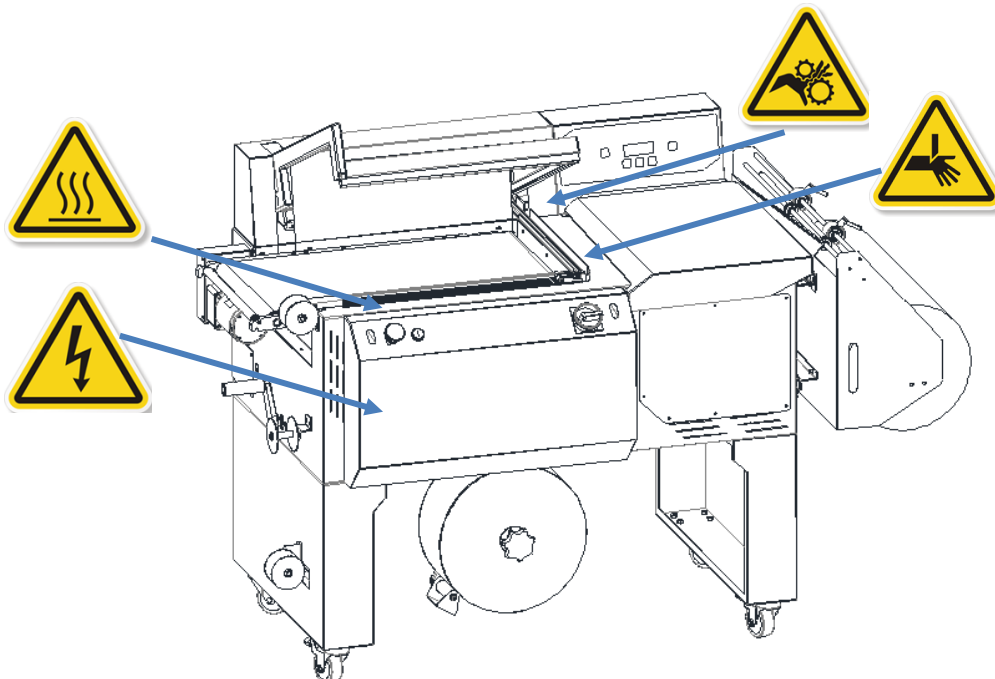
- The size of the package should be under dimension in specification list.
- While running, check the unit for any unusual sounds or smoke emissions.
- Keep away from the heating blade while the machine is operating; do not put your hands or body under the L-BAR when the machine is running.

1.8 After operating

- Remove dust and dirt from the unit
- Turn off the power when the machine is not in use.

1.9 Signs

	<p>Caution! Electric Shock Hazard.</p>
	<p>Caution! Hot Elements.</p>
	<p>Caution! Moving Parts Can Crush Hand.</p>
	<p>Caution! Blade. Cutting of Fingers or Hand</p>





1. MACHINE INFORMATION

2.1 Areas of Application

Packaging Limitation

It's not possible to pack:

- Products larger or heavier than that allowed.
- Wet Products
- Flammable products
- Explosive products
- Agri-foodstuffs
- Pharmaceuticals
- Hazardous products

2.2 Environmental Information

The strapping machine shall be installed in the following conditions:

- Supply voltage: +-10% nominal supply voltage
- Source frequency: +-10% nominal frequency
- Ambient temperature: 5°C - 40°C (41°F-104°F).
- Relative humidity: not exceed 35~85%RH
- Please provide a suitable illumination around the machine for safety operation.

Conditions For Use

Make sure there is room for easy application and maintenance.

The machine must be installed in a closed, well-ventilated area where there are no explosions or fire hazards Position the machine in a place free of humidity, flammable materials, gas or explosives. Make sure that it is level.

Please do not spray water or wet wipe machine body.

Noise - characteristic values



The noise emission values determined according to EN ISO 3746 for the sound power level or EN ISO 11202 for the sound pressure level at the workplace on the basis of the working conditions are as below:

A measurement uncertainty allowance of $K = 4 \text{ dB(A)}$ applies to the stated emission values.

Sound power level $L_{WA} = 79.7 \text{ dB(A)}$

Emission sound pressure level at the workplace $L_{PA} = 73.7 \text{ dB(A)}$

To minimize the emission sound pressure level, machine is equipped with a timer standby mode that can be adjusted by technician.

Demolition and Waste Disposal

The machine does not contain dangerous components or substances which require special disposal procedure. For that which concerns material elimination, comply with the Standards in the country where the machine has been disassembled.

2.3 Machine Description

This machine is manually operated to seal wrap PVC or polyolefin films tightly around the products by heating blade without shrink wrapping. The film is cut at heated blade edges by electrical motor. It is suitable for small packaging line to envelope products into one package for protection and good appearance. This machine can be combined with a heating tunnel to shrink the film tightly onto the products.

2.4 Safety Devices

DANGER!

Operate the machine only when all safety devices are at their place and are functioning correctly.

The machine has been constructed in accordance with the applicable legal regulations.

The machine is reliable in operation. Nevertheless the machine may constitute a danger if it is operated in improper or undue condition.

Danger points that cannot be avoided due to equipment design are equipped with safety devices. If necessary, these points are marked on the machine with warning signs, and in the manual under working safety instructions.

The machine is equipped with safety devices as:

- Warning labels
- Live parts are covered

Only PVC and POF films can be used in this machine. The use of other synthetic films can produce substances hazardous to health.



Caution!

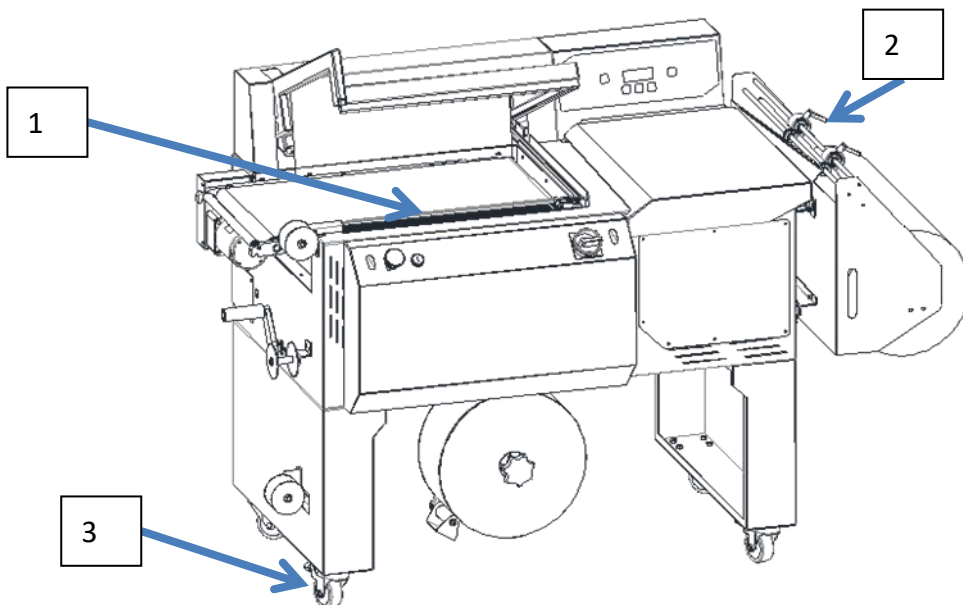
The sealing blade operates at a very high temperature in order to cut the film in clean fashion.

To prevent burns, avoid touch the sealing blade. (1)

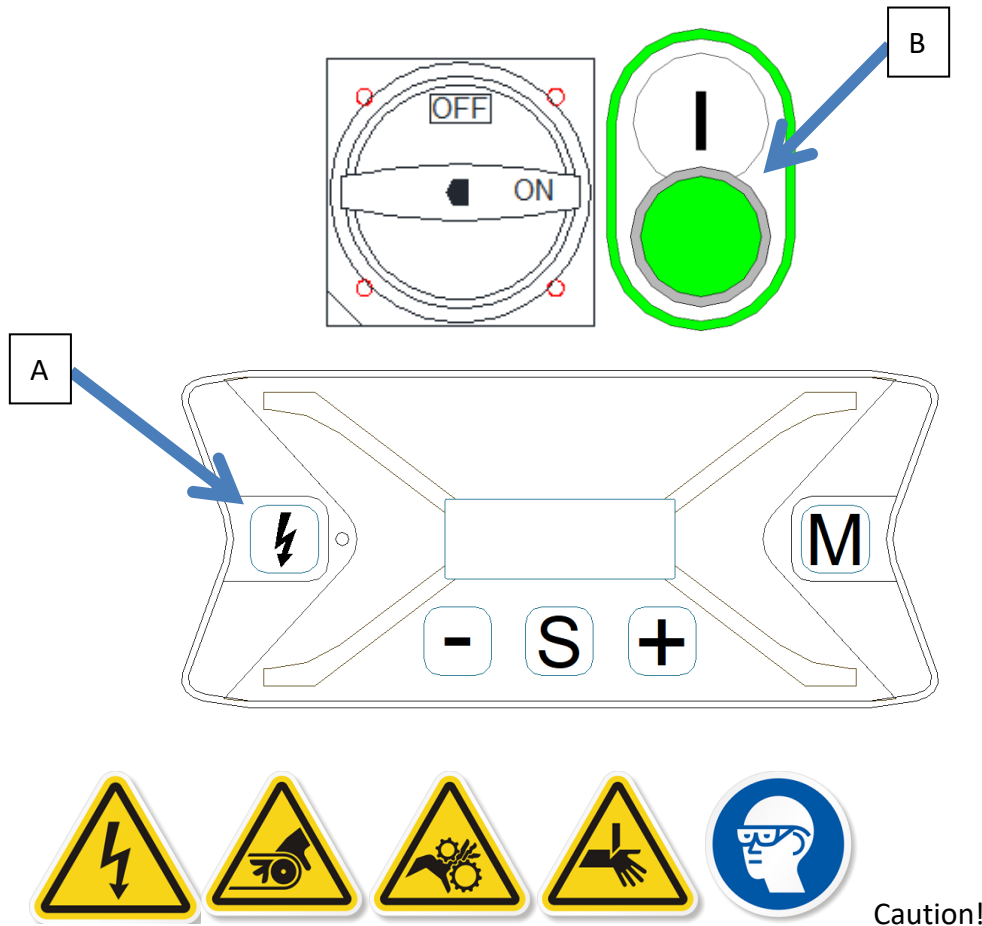
To adjust pin-perf system, avoid to directly touch the pin area though there is cover already cover around the danger area. (2)

To move the machine, the two lockable casters (3) must be unlocked. Relock the two casters when the machine is in its new position.

In certain condition, you might need the emergency stop which we offer as option.



The machine is turned on when it is connected to AC power. The main power switch which located on the front operating panel is placed in the ON position, and also presses to toggle the Enable Power button (A) to start machine, the green light next to button will lit. The machine will be ready for use.to execute one cycle for each time the start button is pressed (B), or if automatic cycle mode is selected, it will be initiated when start button is pressed.

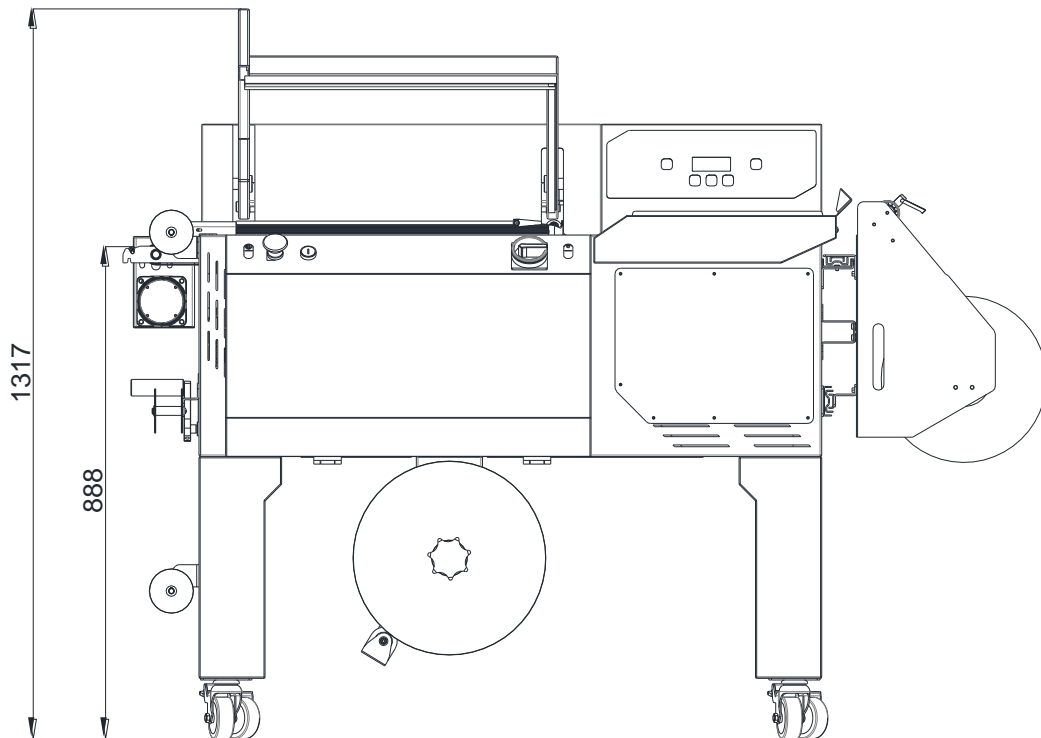
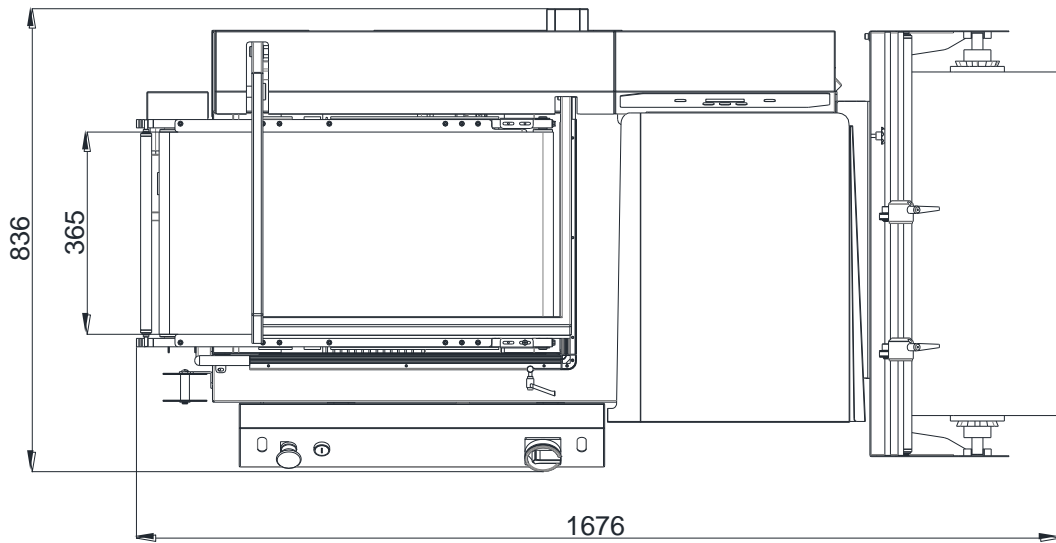


2.5 Technical Specification

2.5.1 Electrical Specification

System Configuration	L1+N+PE (GROUND)
Nominal Power	3.16kW
Rated Current	14.6 A
Rated Voltage	200V/220V/230V/240V
Rated Frequency	50 /60Hz
Type of Current	AC- single phase

2.5.2 Technical information



FILM MATERIAL	PCV, POF
FILM THICKNESS	< 50 μm
FILM WIDTH	600mm
FILM OUTER DIA.	300mm
FILM INNER CORE DIA.	77mm
FILM WIDTH SELECT	Product Width + Product Height + 50mm
SEALING DIMENSION	500mm * 400mm
PRODUCT HEIGHT	< 300mm
PRODUCT WEIGHT	< 15Kg
NOISE EMISSION	60 dB
AMBIENT TEMP.	5°C - 40°C
WORKING HEIGHT	900mm
MACHINE SIZE	(L)1676mm x (W)836mm x (H)888mm with stand
MACHINE WEIGHT	165Kg

2.6 Identification Data of the Machine

Each model is provided with a plate where it is easy to recover data which must be communicated to the manufacturer in case of problem or when requesting spare parts etc. (ref. 1-2-3-4) This plate also carries electrical technical data for installation of the machine. (ref. a-b-c-d-e-f-g).

20F, No. 309, Sec. 2, Taiwan Blvd.,
Taichung, Taiwan, R.O.C.

CE

HEAT SHRINKING MACHINE

MODEL: EKL-145E 1.

SERIAL: H18040151 2.

YEAR: 2018 3.

DOC NO.: EKL-145E-01-B-230 4.

Volt	Hertz	Phase	Watt
230V	50Hz	1~	3.77 kW
Ampere	Short Circuit Rating		Weight
16.4A	6kA		135 kg

1. Model
2. Serial Number
3. Year of Manufacture
4. Doc. Number

- a. Rated voltage (V)
- b. Rated Current (A)
- c. Frequency (Hz)
- d. Short Circuit Rating (A)
- e. Phase (PH)
- f. Rated power (Watts)
- g. Weight (kg)

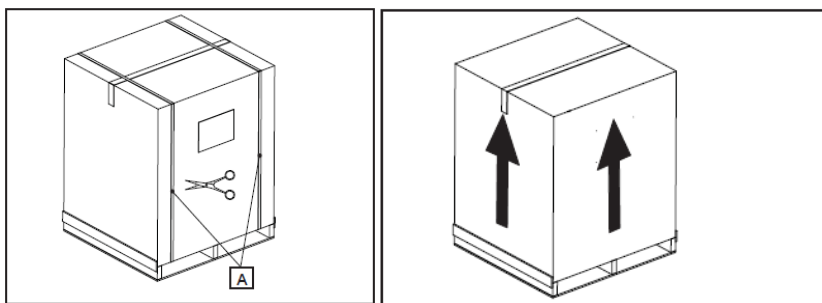
2. BEFORE OPERATING THE MACHINE

3.1 Shipping

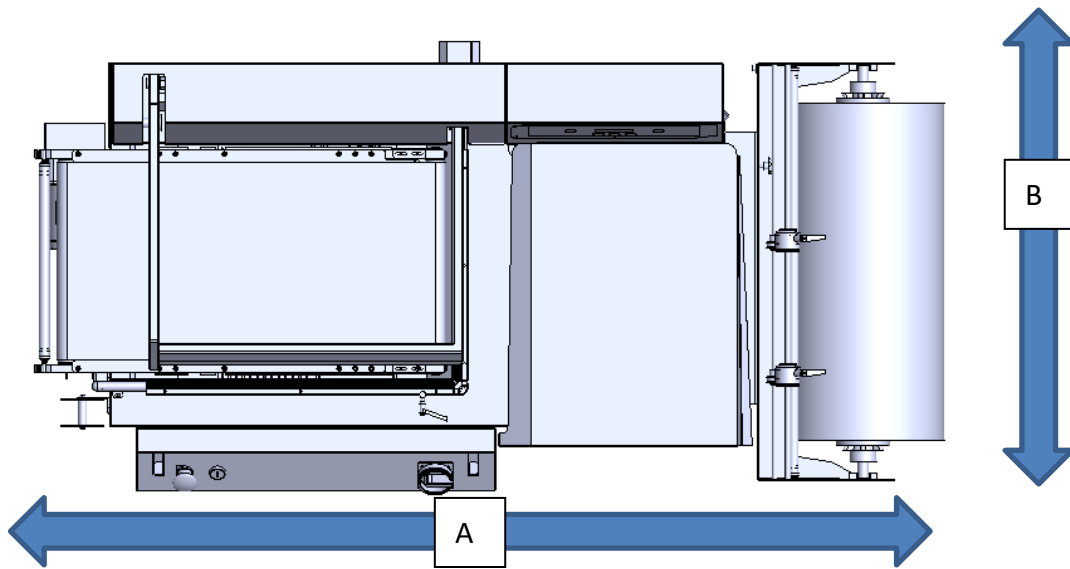
The machine is delivered as a transport unit. The machine is loaded onto a wooden pallet with Polyester strap secured. Outside with carbon box also with Polyester strap secured.

3.2 Unload Machine from Pallet & Installation

Cut Polyester strap and then move the carbon box upward.



3.3 Operation Space

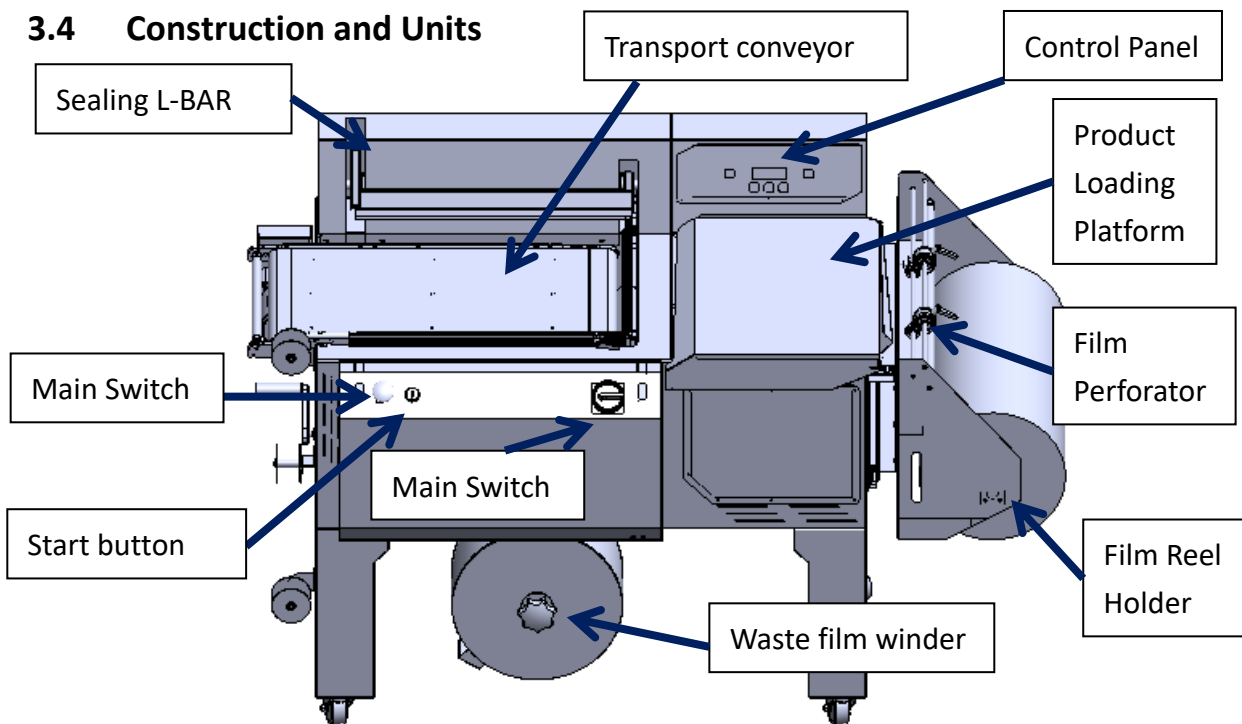


Keep the area (A) and (B) free for the operator.

The area (A) is necessary for operating L bar sealing machine.

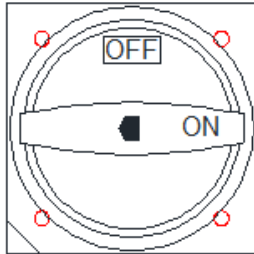
The area (B) is necessary for changing the film.

3.4 Construction and Units

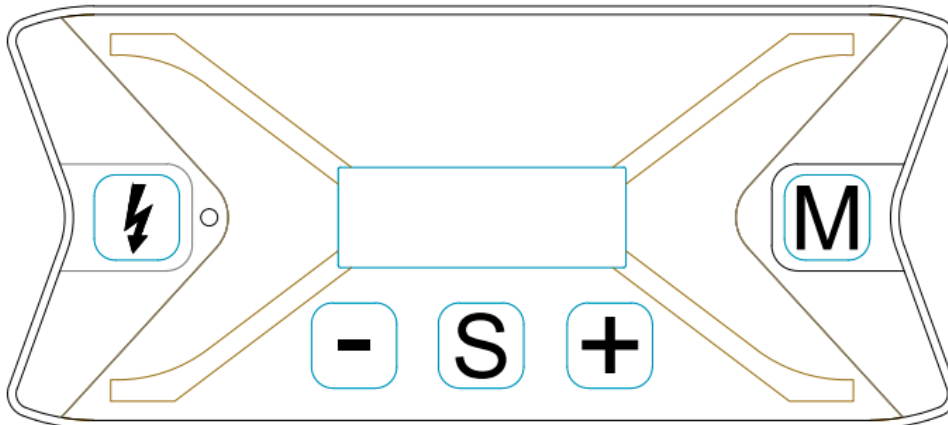


3.5 Operation Panel

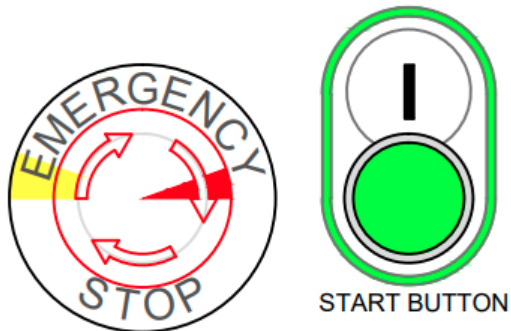
- a. Main Power Switch:



- b. Control Panel:

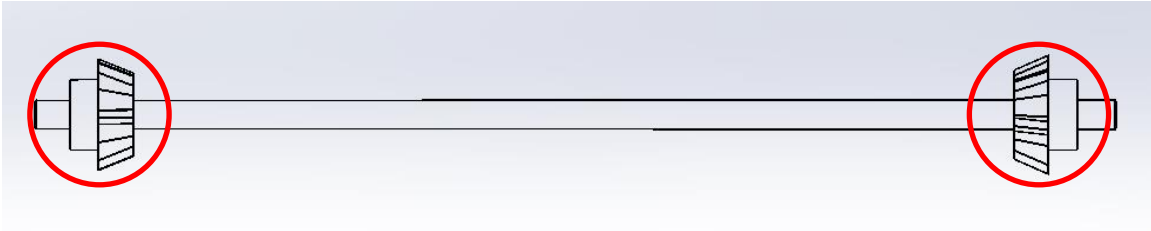


- c. Start button and Emergency Stop:



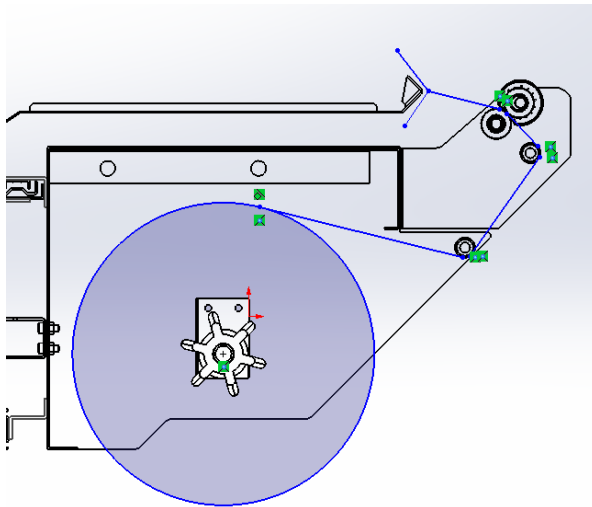
3.6 Film Threading

- a. Please remove the film seat unit from the machine



- b. Remove the film holder on one side, install the film and then fix the film holder on both sides to proper position

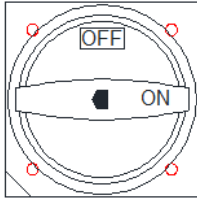
- c. Follow the below drawing for film threading



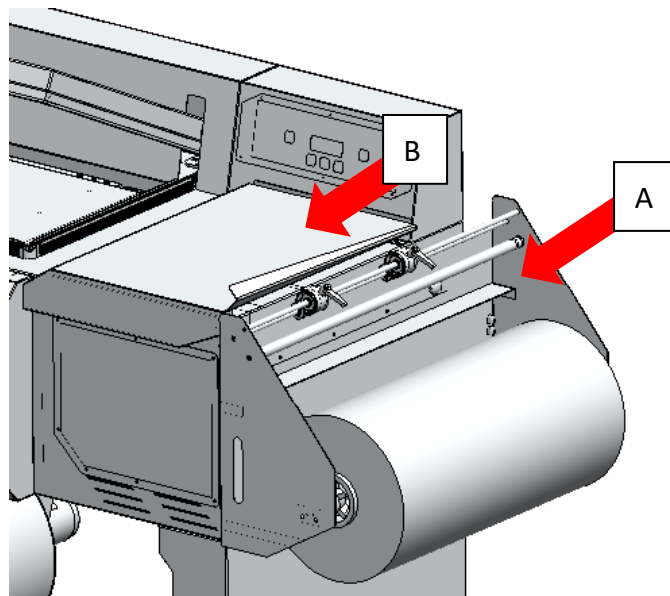
3. OPERATING THE MACHINE

4.1 Machine operating

- a. Turn the machine power switch ON



- b. Installed shrink film (follow instruction 3.6)
- c. Adjust film loading seat (A) and product platform (B) to fit with your product size



- d. Enable operation power before operating cycle



4.2 Setting



Press “S” then you are able to cycle through below settings, then use ‘+’ & ‘-’ to adjust setting values.

- Sealing temperature:

SEALING	1.5 4.5 6.0 9.0
TEMPERATURE	6.5

- Conveyor delivery timer:

CONVEYOR	1.5 4.0 6.5 9.0
OUTPUT TIMER	2.5

- Cooling delay before bar opening

OPENING	0.2 0.4 0.7 0.9
DELAY	0.8

- Timer setup for automatic cycle

AUTO CYCLE	1.5 4.5 6.5 9.0
INTRVAL	0.5

- e. Memory mode setup



Press “M” then you are able to enter memory settings, then use ‘+’ & ‘-’ to cycle through setting modes.

MEMORY	
	M0 1

While in the given mode, all adjustments of setup made will be stored in the mode.

4. TROUBLE SHOOTING

Error list & possible solution

- M302 EMERGENCY STOP ACTIVATED
 - Please check if the emergency stop is depressed and release it
 - Check for emergency stop fail or circuit wiring fail
- M305 BAR CLOSING SAFETY ACTIVATED
 - Sealing bar was interrupted by object during closing, please reset machine
 - Check for mechanical fail, safety sensor fail or circuit wiring fail
- M304 BAR CLOSING OVER TIME
 - Sealing bar did not fully close in time, check for hardware failure.
 - Check for mechanical fail, closing detection sensor fail or circuit wiring fail
- M355 BAR SAFETY SENSOR ERROR
 - Safety sensor did not respond when sealing bar fully close (EKL-145E self-diagnose feature)
 - Check for safety mechanism fail, safety sensor fail or circuit wiring fail
- M306 BAR PRESSURE ERROR
 - Pressure sensor did not respond when sealing bar fully close
 - Check for mechanical fail, pressure sensor fail or circuit wiring fail
- M303 BAR OPENING OVERTIME
 - Sealing bar home sensor did not respond in time when bar open.
 - Check for mechanical fail, sensor fail or circuit wiring fail.
- M307 INVERTER ERROR
 - Inverter abnormality, check for wiring fail or replace inverter



5. MAINTENANCE

Note: Before doing any maintenance or service, please do switch off the main power on the machine, then wait for the machine to cool down.

Warning:

- a. Wear safety glasses with side shields which conform to ANS Standard Z87.1
- b. Failure to wear safety glasses could result in severe personal injury or blindness.
- c. Wear Ear Protection.
- d. Only trained personnel should perform servicing of machine.
- e. Unless specified, shut off and disconnect all electrical power during maintenance.
- f. Follow all service instructions.
- g. Caution for moving parts can crush.
- h. Caution for pinch point entanglement.
- i. Caution for cutting of finger or hand from straight blade.
- j. Use the correct tools.

Cleaning & Lubricate

The machine operates with plastic films which may leave deposits on the sealing blade and affecting sealing quality. Regular machine cleaning is recommended:

The sealing blades:

Keep the sealing blades clean by using a rag or NON-METALLIC scraper (or thumb –nail!) and keep the Teflon tape on the both top jaw clear in same way. Apply a SILICONE LUBRICANT spray to top and Bottom jaws, several times a day, for easier and cleaner machine operation.

CAUTION IN OPERATION

To in order to make your packaging products Sealed and shrunk completely, you can operate the machine as following:

1. In order to seal the product, you must pre-heat the heating element by repeating several empty cycles when you initiate the work session or heat up again in the case of your operation is interrupted.
2. The experience is important for adjustment and setup. You will know the appropriate sealing time shrinking temperature and operating frequency by operating the machine continually.
3. You will be known that only have a good product sealer, your product will be shrunk completely. Therefore, when you operate the machine for sealing or sealing and shrinking, you can close the hood with your high hand, almost at the same time, pull the film by the waste film to move from left to right after sealing time is finished.

ROUTINE MAINTENANCE It is advisable to have two qualified personnel for Maintenance.



BEFORE ATTEMPTING ANY MAINTENANCE:

TURN MAIN SWITCH OFF AND DISCONNECT POWER SUPPLY!



CAUTION HOT!! CAUTION HOT!! SEALING BLADE REPLACEMENT

Undo the screws on the expansion blocks and the central knuckle. Remove the broken seal blade and fit new one after cleaning the sealing base of any deposits/dirt. A piece of Teflon tape around the corner of the wire helps seal quality and insulation of heat. Introduce the end of the front seal blade 15mm inside the plunger to the RIGHT in order to compress the spring. Then tighten the screws. Repeat the process with the tighten the screws on the center buckle.



02 9452-3566
sales@getpacked.com.au



EXTEND

Extend the partnership

SILICONE RUBBER REPLACEMENT

The silicone rubber strip inside the top jaw must remain flat and undamaged. If it is necessary to replace the rubber, pull the damaged strip out and clean away any silicone adhesive. Replace the rubber strip using fresh silicone adhesive sparingly. Leave to cure overnight.

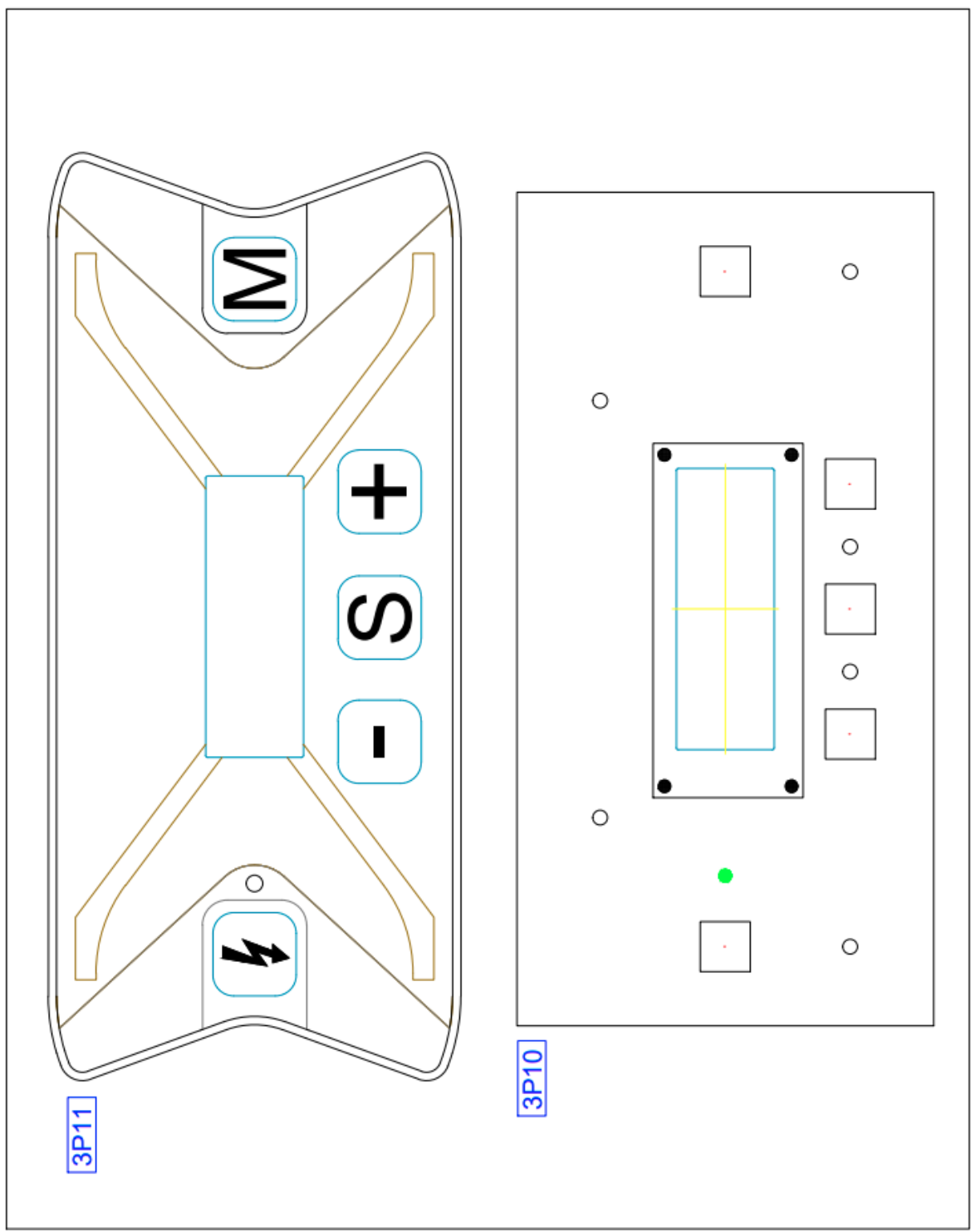
REGULAR REPLACEMENT of the TEFLON BARRIER TAPE will increase the life of the Silicone rubber.

TEFLON BARRIER TAPE REPLACEMENT

Remove old Teflon barrier tape before it burns or marks bodily. The tape is supplied on a roll, with self-adhesive backing. Simply cut to length. Remove backing protection and stick in place.

6. ELECTRIC WIRING DIAGRAM & PART

Layout Diagram





ELECTRIC PARTS LIST FOR EKL-145E

KEY NO	PART NO	DESCRIPTION	Q'TY
1Q2	P0311-010002800	POWER ISOLATOR SWITCH ZH-HD-1-48-BY	1
3P10	P0309-010016500	EKL-145E DISPLAY PC BOARD	1
3P11	P1002-0011500	EKL-145E PANEL LABEL	1
3S5	P0313-010005700	START BUTTON	1
3S5	P1001-0041200	START BUTTON LABEL	1
3S6	P0313-010006300	EMERGENCY STOP XA2ES542	1
3S6	P1001-0001400	EMERGENCY STOP LABEL	1
1F2	P0305-010001200	NO-FUSE BREAKER IK60N2PC16A	1
1F6	P0305-010001500	NO-FUSE BREAKER IC60N1PC2A	1
1Q4	P0307-010002200	POWER SUPPLY HDR-6024 24Vdc-2.5A	1
2U2	P0315-010000300	INVERTER ATV12H037M2	1
3P5	P0309-010016800	EKL-145E MAIN CARD	1
1T1	P0304-010008500	TERMINAL SEAT	1
2M4	P0501-0022100	GEAR REDUCER MOTOR 220V, 3PH	1
FAN1 FAN2	P0303-010001900	FAN KA8225HA2BAT AC230V	2
FAN1 FAN2	P0303-020000100	FAN GUARD FG-08	2
3T2	P0321-0005000	TRANSFORMER 240-220-200V/50V,850VA	1
3H1	P0314-030001200	HEATING WIRE	1
3M2	P0501-0021000	CAM REDUCER MOTOR 220V	1
3C3	P0318-040002300	CAPACITOR CPCT-10-450V(10UF450V)	1
3S7	P0302-010000400	PROXIMITY SENSOR PL-05N	1
3L8	P0311-060000500	LIMIT SWITCH TM-1307	1
3L8	P0316-030000200	SWITCH COVER	1
3L8A	P0311-060000200	MICROSWITCH VX-5-1A2	1
3S9	P0302-010000400	PROXIMITY SENSOR PL-05N	1
1K7	P0306-010000400	CONTACTOR LC1D18BL,DC24V	1
3C3A	P0318-040002300	CAPACITOR CPCT-10-450V (OPTIONAL)	1



02 9452-3566
sales@getpacked.com.au



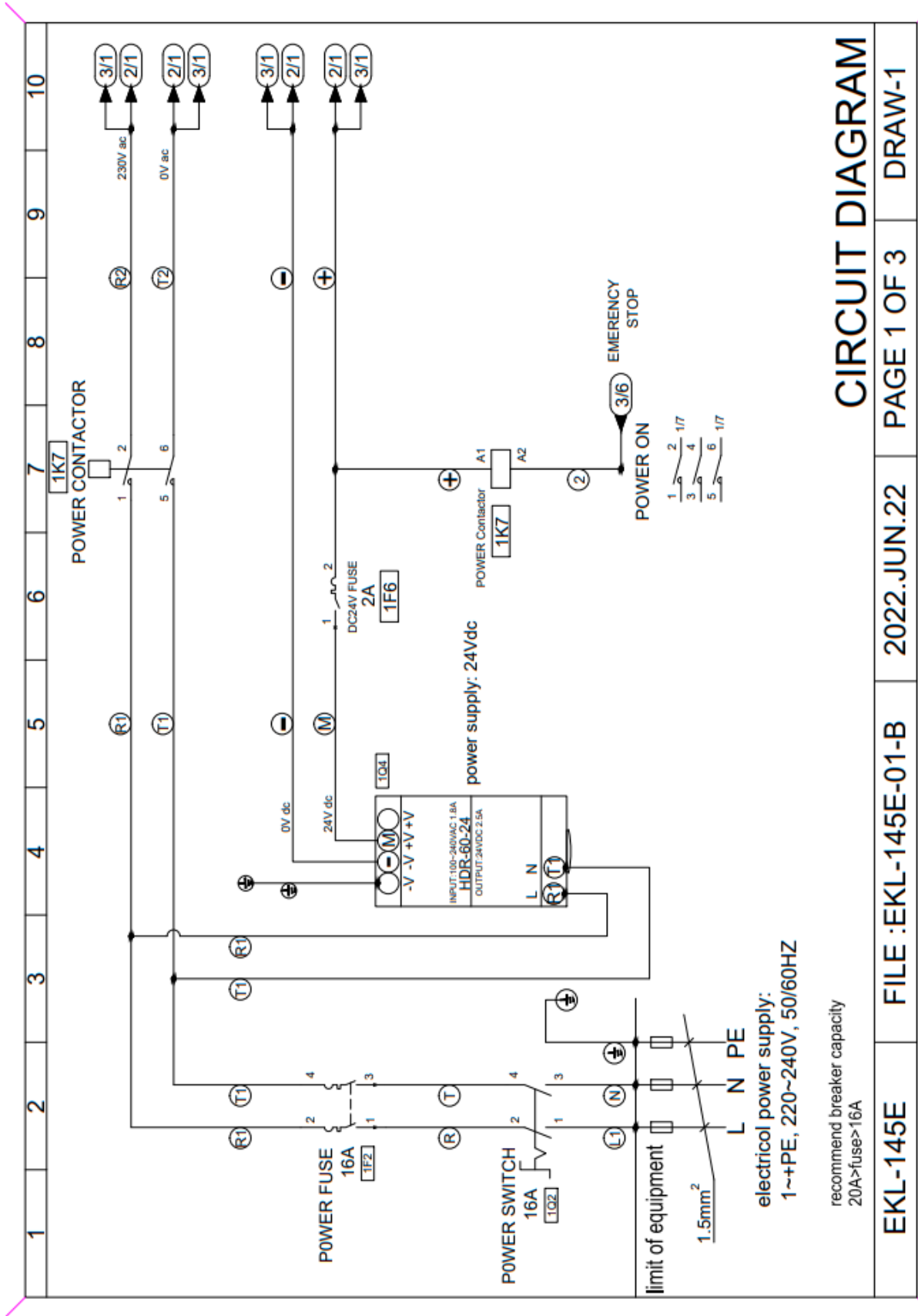
EXTEND

Extend the partnership

ELECTRIC PARTS LIST FOR EKL-145E

KEY NO	PART NO	DESCRIPTION	Q'TY
3M3	P0501-0021000	CAM REDUCER MOTOR 220V (OPTIONAL)	1
3S4	P0311-060001800	LIMIT SWITCH-XCE145 (OPTIONAL)	1
3T4	P0304-010003900	TERMINAL SEAT TB15-3 (OPTIONAL)	1

Circuit Diagram



CIRCUIT DIAGRAM

DRAW-1

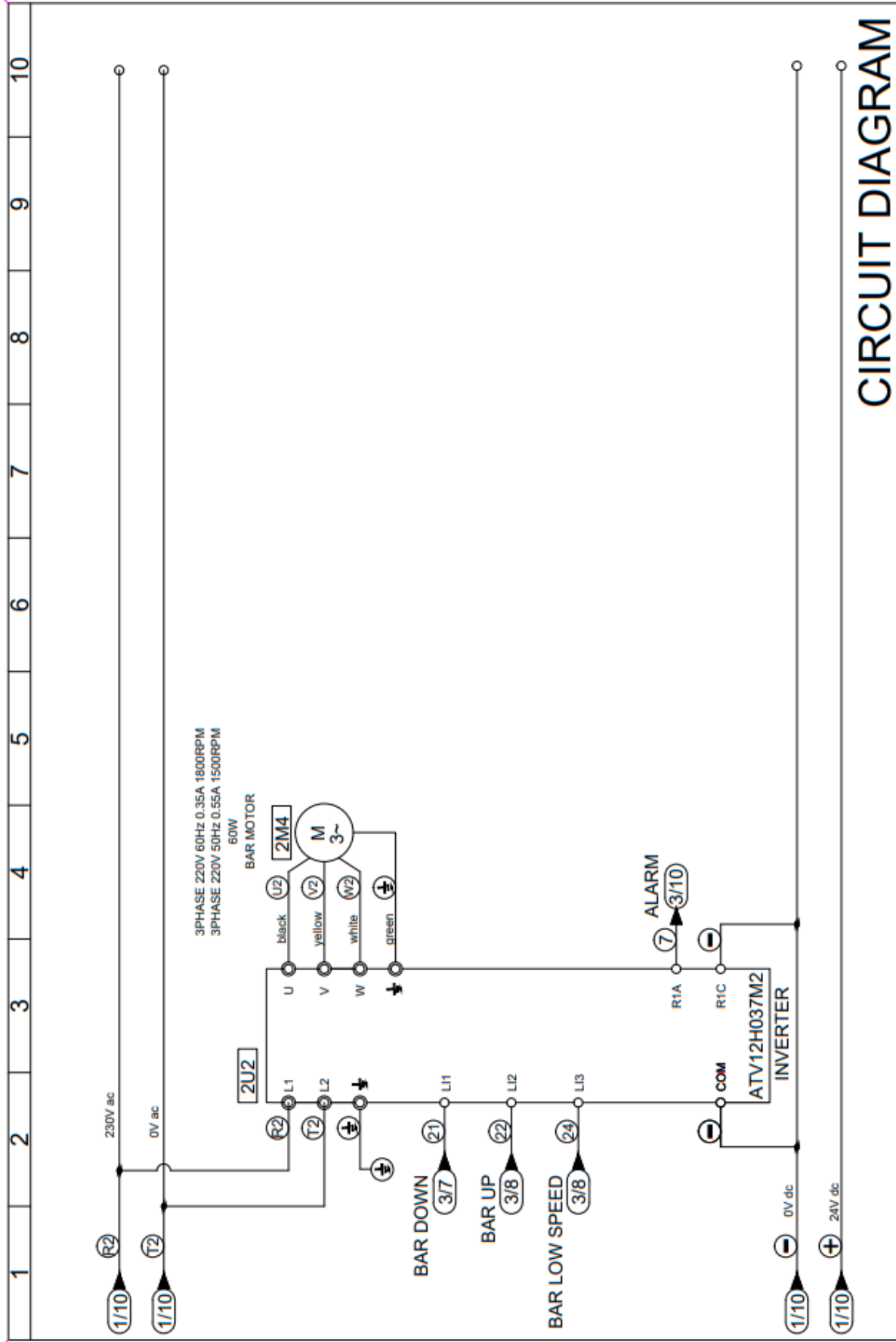
PAGE 1 OF 3

2022.JUN.22

FILE :EKL-145E-01-B

EKL-145E

electrical power supply:
1~+PE, 220~240V, 50/60HZ
recommend breaker capacity
20A>fuse>16A



CIRCUIT DIAGRAM

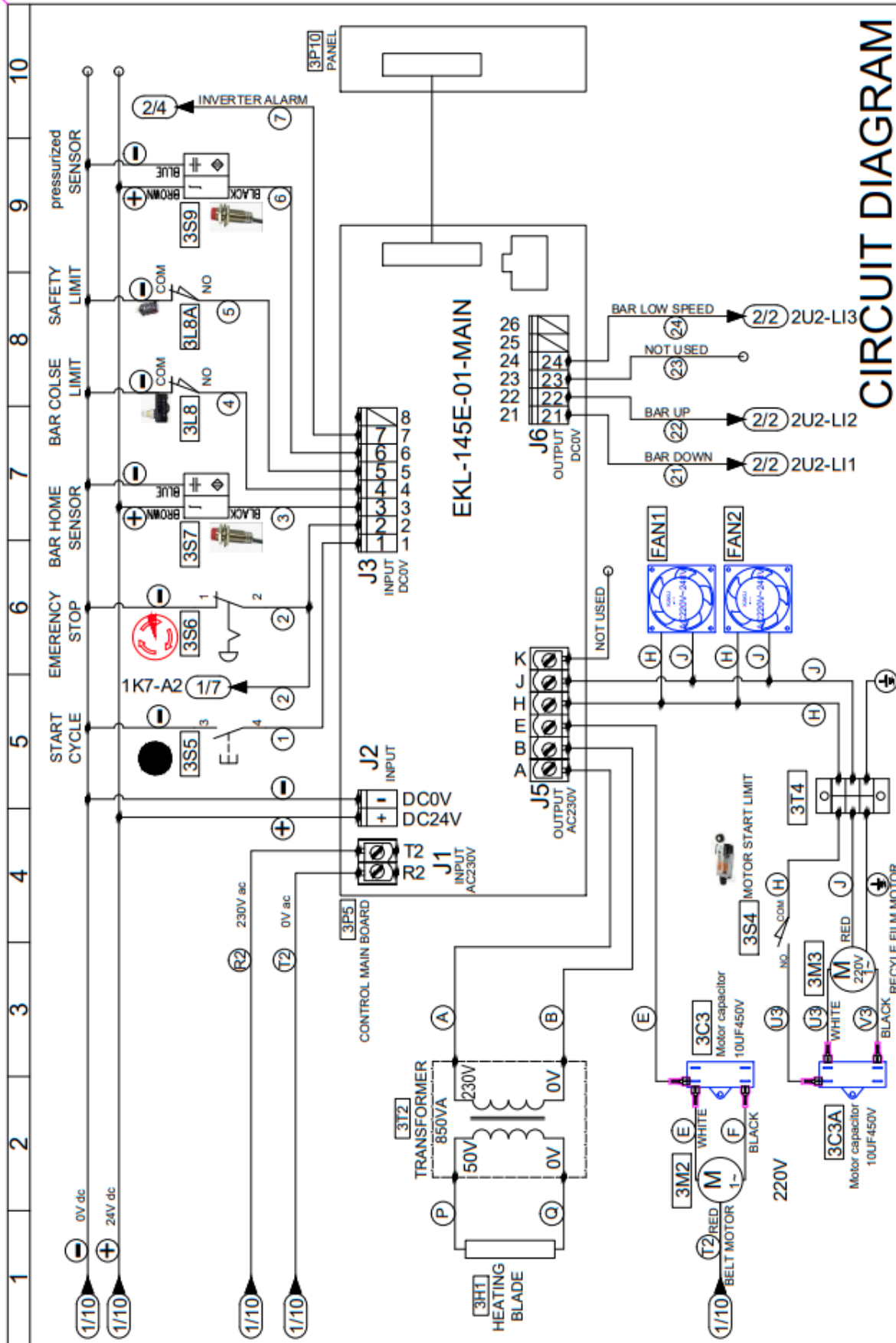
DRAW-2

PAGE 1 OF 3

2022.JUN.22

FILE :EKL-145E-01-B

EKL-145E



CIRCUIT DIAGRAM

DRAW-3

PAGE 1 OF 3

2022.JUN.22

FILE :EKL-145E-01-B

EKL-145E



02 9452-3566
sales@getpacked.com.au

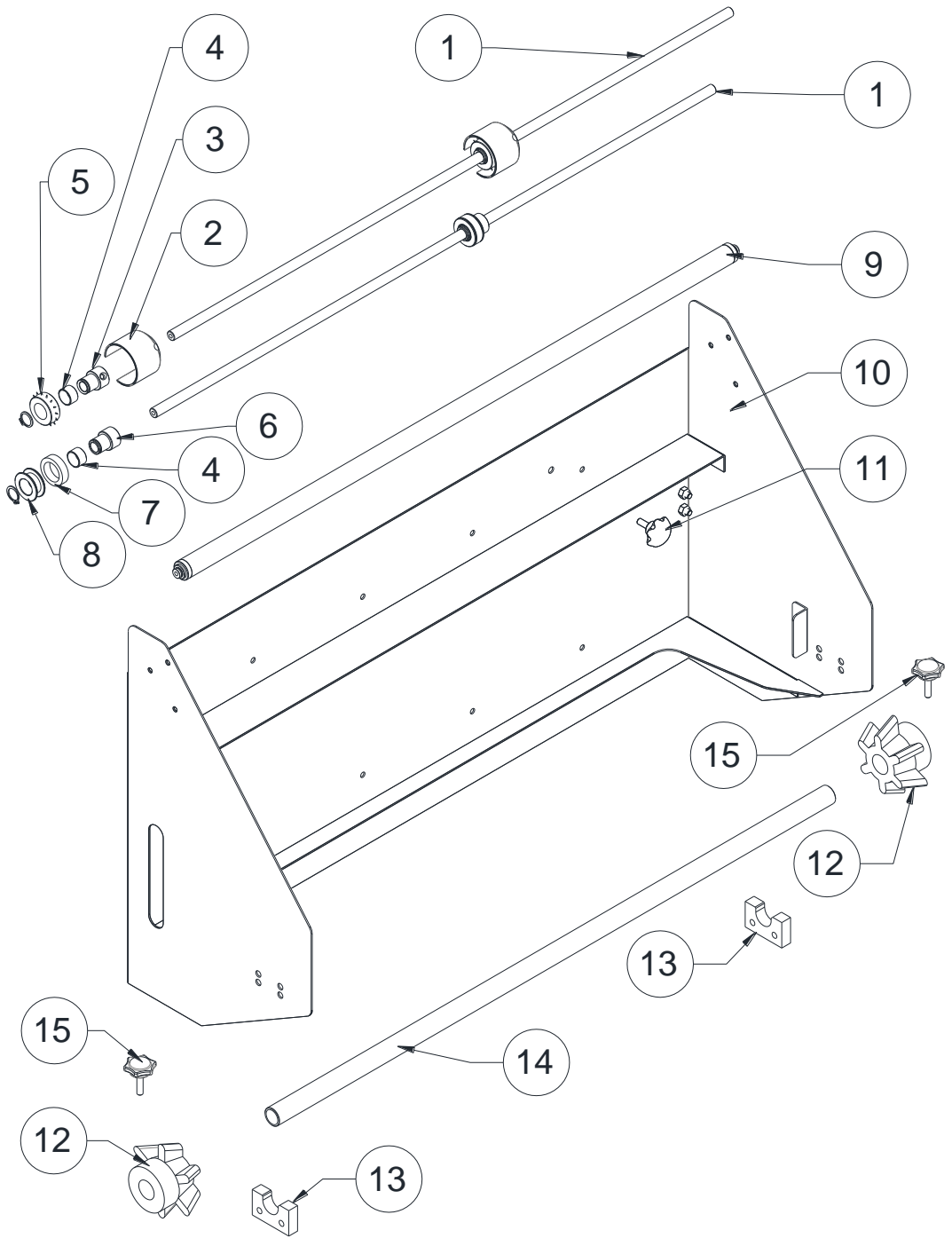


EXTEND

Extend the partnership

7. PART LIST

8.1 FILM SEAT





02 9452-3566
sales@getpacked.com.au



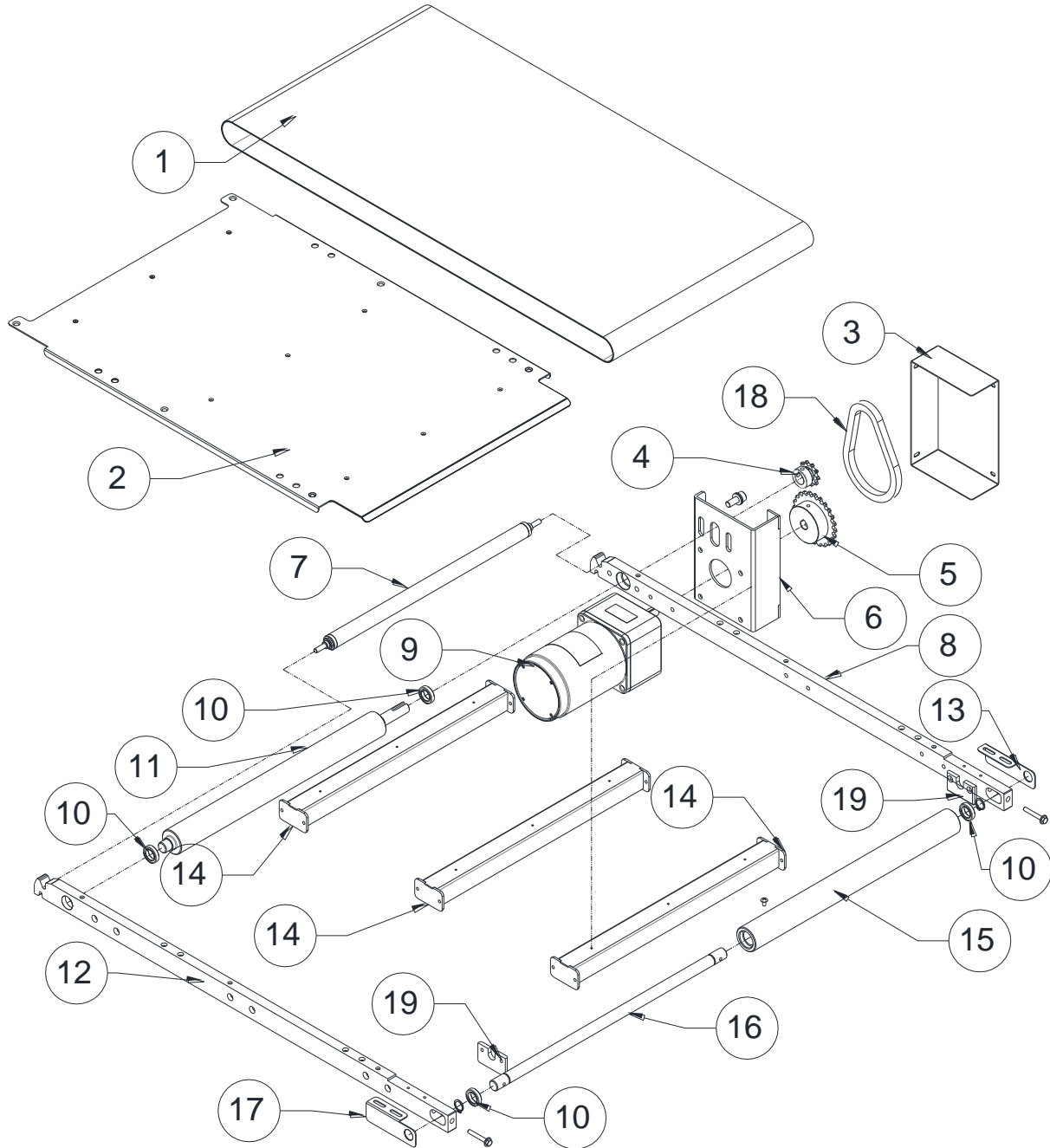
EXTEND

Extend the partnership

FILM SEAT PART LIST FOR EKL-145E

KEY NO	PART NO	DESCRIPTION	Q'TY
1	P02-032000B	SHAFT	2
2	P06-005960A	PIN COVER	2
3	P02-031700A	PIN ROLLER SHAFT	2
4	P1104-0315101	BUSHING	4
5	P06-0059200	PIN	2
6	P02-0317100	ROLLER SHAFT	2
7	P06-005940A	RUBBER ROLLER	2
8	P06-0059300	ROLLER SEAT	2
9	P08-000950A	PIN ROLLER	1
10		FILM SEAT FRAME	1
11	P1113-0000400	KNOB M6*16L	1
12	P06-0041200	FILM FIX CONE	2
13	P06-0029600	FILM SHAFT SUPPORT	2
14	P02-031950A	FILM SHAFT	1
15	P1113-0002400	KNOB SCREW M6*25	2

8.2 BELT TRANSPORT UNIT

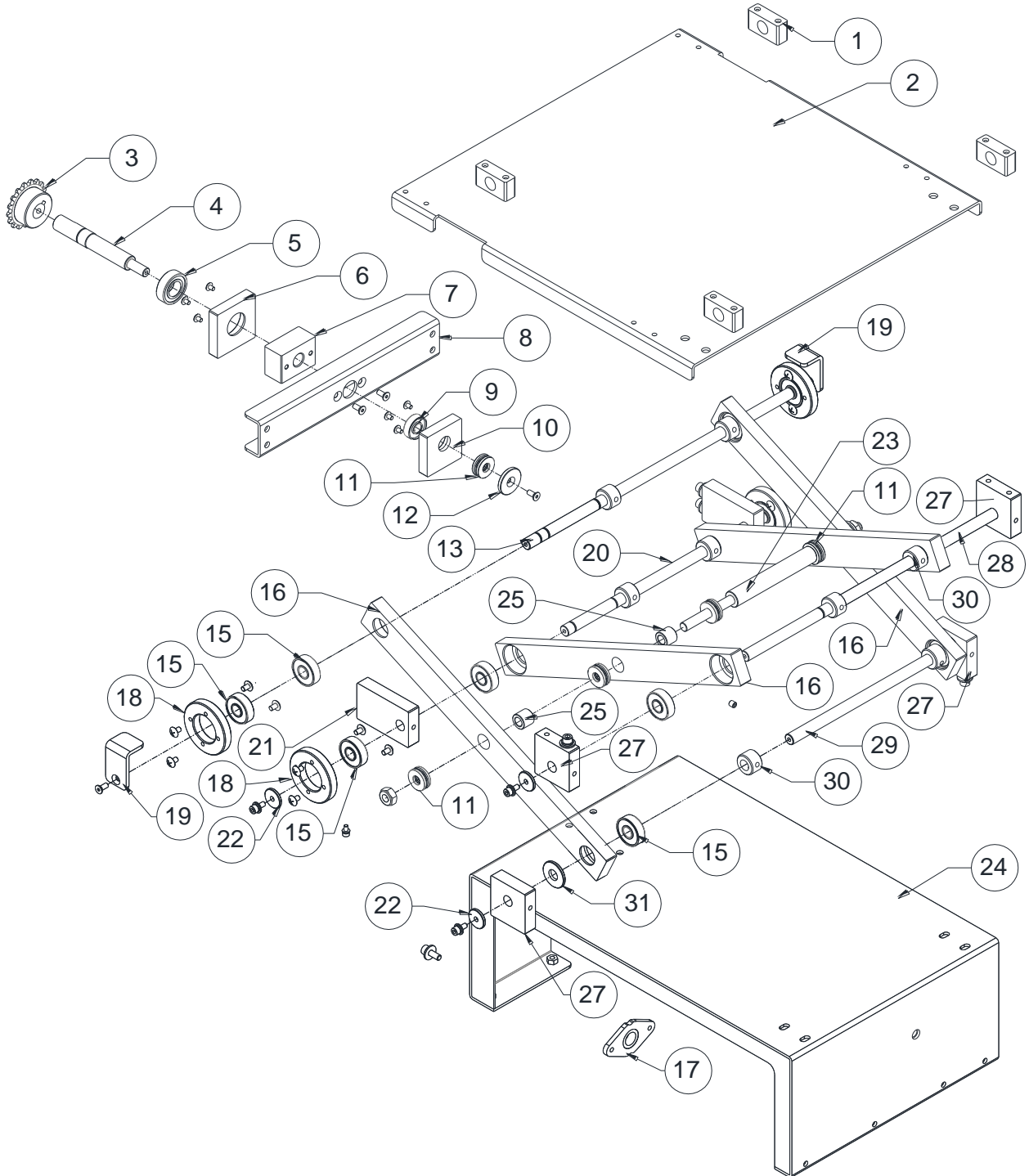




BELT TRANSPORT UNIT PART LIST FOR EKL-145E

KEY NO	PART NO	DESCRIPTION	Q'TY
1	P0902-0011000	CONVEYOR BELT	1
2		BELT SUPPORT PLATFORM	1
3		CHAIN COVER	1
4	P0702-000460A	SPROCKET 10T	1
5	P0702-0013000	SPROCKET 24T	1
6	P01-0670500	MOTOR FIX PLATE	1
7	P08-0012100	PINCH-FREE ROLLER	1
8	P02-0407200	CONVEYOR BRACKET (REAR)	1
9	P0501-0021200	MOTOR	1
10	P1104-026802ZZ0	BEARING 6802ZZ	4
11	P02-0407300	CONVEYOR DRIVING ROLLER	1
12	P02-0407100	CONVEYOR BRACKET (FRONT)	1
13	P01-0673500	BELT POSITION BRACKET (REAR)	1
14		SUPPORT BEAM	3
15	P02-0406900	BELT DRIVEN ROLLER	1
16	P02-0407000	BELT DRIVEN ROLLER SHAFT	1
17	P01-0673200	BELT POSITION BRACKET (FRONT)	1
18	P0901-0001700	CHAIN #35x36	1
19	P06-0077800	SLIDING BLOCK	2

8.3 ELEVATION UNIT

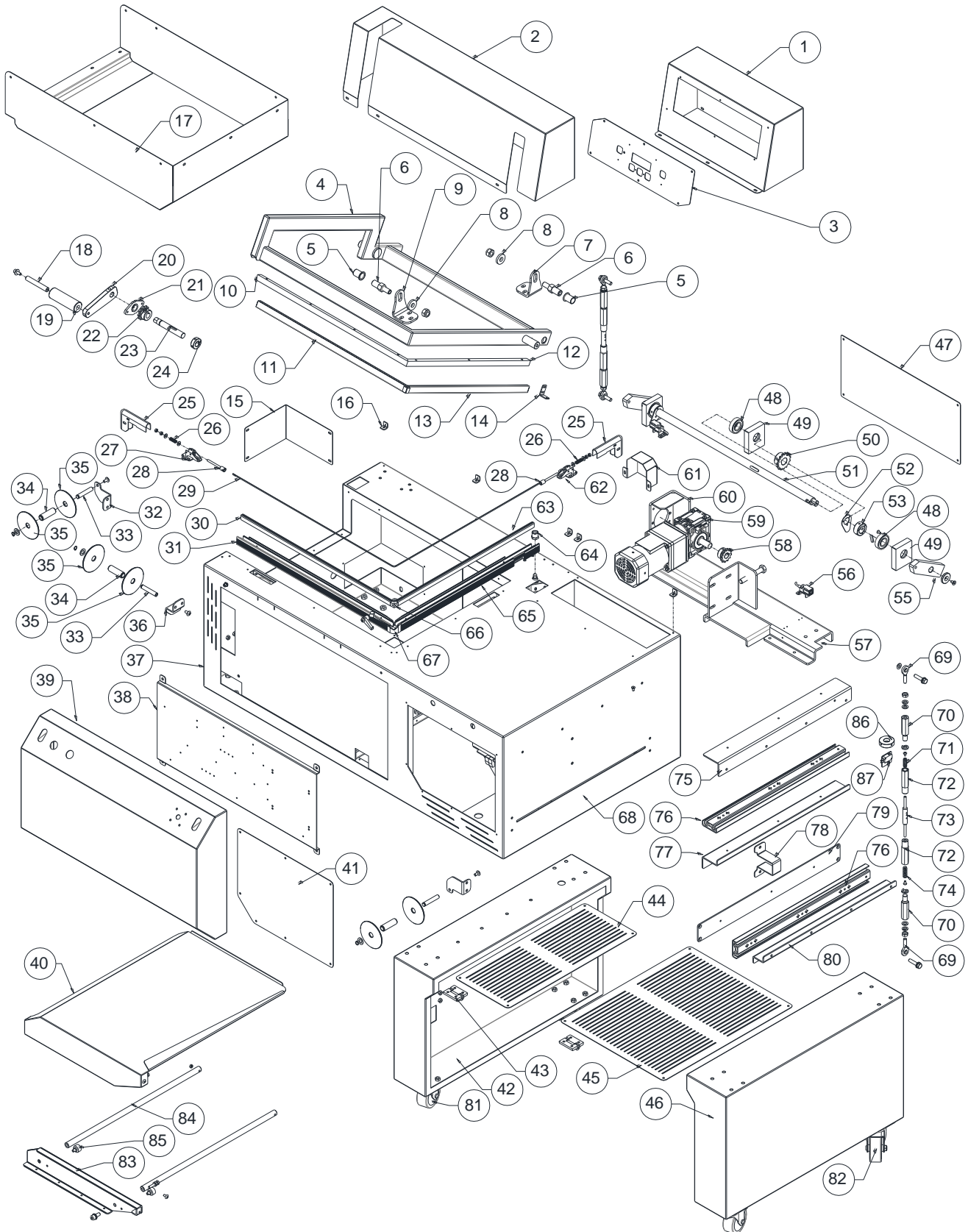




ELEVATION UNIT PART LIST FOR EKL-145E

KEY NO	PART NO	DESCRIPTION	Q'TY
1	P02-033880A	BELT GUIDE BLOCK	1
2		ELEVATION PLATFORM	1
3	P0702-0009600	DRIVEN SPROCKET 17T	1
4	P02-0409800	THREADED ROD	1
5	P1104-026003ZZ0	BEARING 6003ZZ(CWB)	1
6	P02-0410000	SPROCKET BEARIN SEAT	1
7	P02-0409700	PUSH BLOCK	1
8		PUSH BEAM	1
9	P1104-026000ZZ0	BEARING 6000ZZ(CWB)	1
10	P02-0409900	BEARING SEAT	1
11	P1104-11511000	BEARING 51100(GPZ)	7
12	P01-0674400	BEARING WASHER	1
13	P02-0409400	SHAFT	1
15	P1104-026201ZZ1	BEARING 6201ZZ	12
16	P02-0410300	BEAM BEARING SEAT	4
17	P01-0135000	SHAFT SEAT WITH BUSHING	1
18	P06-0078300	ROLLER	4
19	P01-0674600	POSITION PLATE	2
20	P02-0409500	SHAFT	1
21	P02-0410100	SHAFT SEAT	2
22	P01-0674700	WASHER	6
23	P02-0409600	CENTER SHAFT	1
24		ELEVATION SEAT	1
25	P02-0410500	CENTER SHAFT BUSHING	4
27	P02-0410200	SHAFT SEAT	4
28	P02-0409200	SHAFT	1
29	P02-0409300	SHAFT	1
30	P02-0410600	BUSHING	8
31	P01-0674800	WASHER	2

8.4 MAIN BODY





MAIN BODY PART LIST FOR EKL-145E

KEY NO	PART NO	DESCRIPTION	Q'TY
1		UPPER FRAME (R)	1
2		UPPER FRAME (L)	1
3	P01-0669700	CONTROL PANEL	1
4	P01-0669800	SEALING BAR	1
5	P1104-0316250	BUSHING	2
6	P02-031820A	SEALING BAR SHAFT	2
7	P01-0688200	ADJUSTMENT SEAT	1
8	P01-0503300	SPACER	2
9	P01-0688300	SEALING BAR SHAFT	1
10	P02-0407400	UPPER ALUMINIUM SEAT (LONG)	1
11	P06-0038800	CUSHION STRIP (LONG)	1
12	P02-0407500	UPPER ALUMINIUM SEAT (SHORT)	1
13	P06-0038900	CUSHION STRIP (SHORT)	1
14	P01-0671200	LIMIT SWITCH PLATE	1
15		ACCESS HOLE COVER	1
16	P01-0673800	COVER FIXER	5
17		INNER COVER	1
18	P02-0080800	HANDLE	1
19	P06-0022900	HANDLE ROLLER	2
20	P01-0671400	HANDLE ARM	1
21	P01-0135000	SHAFT SEAT	1
22	P0702-0004800	SPROCKET 12T	1
23	P02-0409100	HANDLE SHAFT	1
24	P02-0083500	HANDLE SPACER	1
25	P06-006050A	HEATING WIRE COVER	2
26	P1201-0007500	SPRING	2
27	P06-0078000	HEATING WIRE SEAT	1
28	P02-0173200	HEATING WIRE CLAMP	2
29	P0314-030001200	HEATING WIRE	1
30	P02-0237300	HEATING ROW (LONG)	1
31	P02-0319900	LOWER ALUMINIUM SEAT (LONG)	1
32	P01-0670000	BRACKET	1



MAIN BODY PART LIST FOR EKL-145E

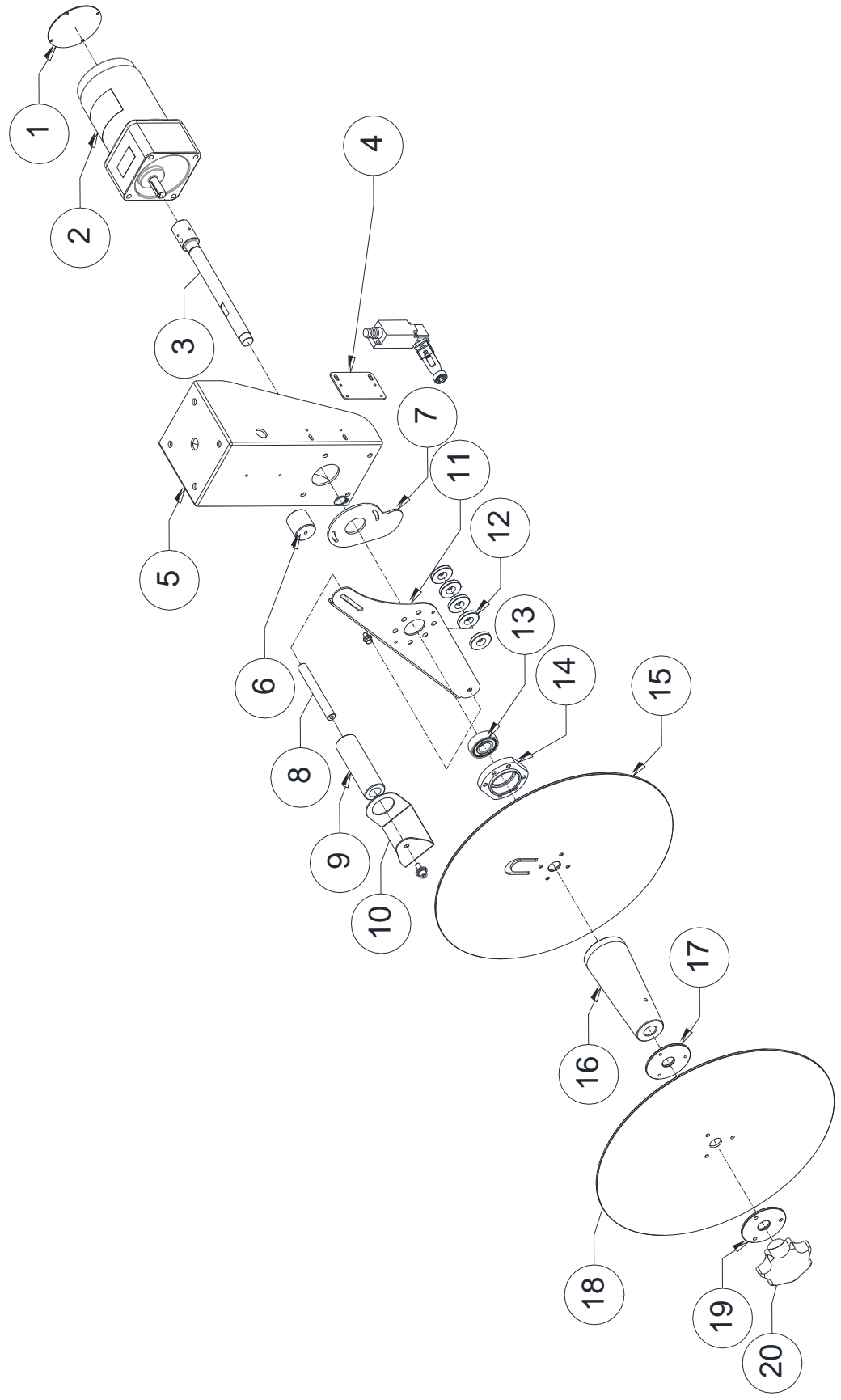
KEY NO	PART NO	DESCRIPTION	Q'TY
33	P02-0081500	SHAFT	3
34	P06-0078100	ROLLER	3
35	P01-0673100	ROLLER SIDE PLATE	6
36	P01-0671100	BRACKET	1
37	P01-0668900	MAIN BODY FRAME	1
38		ELECTRICAL BOARD	1
39	P01-0669300	FRONT PANEL FRAME	1
40	P01-0507800	LOADING PLATFORM	1
41	P01-0671300	FRONT COVER	1
42		BASE FRAME (L)	1
43	P1110-020000500	HINGE	2
44	P01-0672700	COVER (S)	1
45	P01-0672800	COVER (L)	1
46		BASE FRAME (R)	1
47		REAR COVER	1
48	P1104-026004ZZ0	BEARING 6004ZZ(CWB)	3
49	P02-0407900	BEARING SEAT	3
50	P0702-0012900	SPROCKET	1
51	P02-0407800	DRIVING SHAFT	1
52	P01-0672200	SENSOR PLATE	2
53	P02-0408800	SENSOR ADJUSTMENT BLOCK	2
55	P02-0408000	DRIVING ARM	2
56	P01-0673400	PROX. SENSOR FIX PLATE	2
57	P01-0670400	SEALING SYSTEM SEAT	1
58	P0702-000490A	SPROCKET 12T	1
59	P0501-0021100	GEAR REDUCER	1
60	P01-0673300	MOTOR SEAT	1
61	P01-0673700	COVER	1
62	P06-006020A	HEATING WIRE SEAT	1
63	P02-0237400	HEATING ROW (SHORT)	1
64	P02-0317700	LIMIT SWITCH SEAT	1



MAIN BODY PART LIST FOR EKL-145E

KEY NO	PART NO	DESCRIPTION	Q'TY
65	P02-0319800	LOWER ALUMINIUM SEAT (SHORT)	1
66	P02-017310B	BRONZE JOINT	1
67	P06-0060400	JOINT SEAT	1
68		MAIN BODY FRAME	
69	P1104-060001500	ROD END	4
70	P02-0408300	CONNECTOR (OUTER)	4
71	P1201-0011900	SPRING	2
72	P02-0408200	CONNECTOR (INNER)	4
73	P02-0408100	INTERMEDIATE SHAFT	2
74	P1201-0011800	SPRING	2
75	P01-0672300	RAIL FIX PLATE	1
76	P1124-0001600	SLIDING RAIL	2
77	P01-0672400	RAIL SEAT	1
78	P01-0672500	POSITION PLATE	1
79	P01-0671600	RAIL SEAT	1
80	P01-0671700	RAIL FIX PLATE	1
81	P1107-0004600	CASTER WITH BRAKE	2
82	P1107-0004500	CASTER	2
83	P01-0673600	LOADING PLATFORM SEAT	1
84	P02-0408400	SLIDE SHAFT	2
85	P06-004980A	CUSHION	2
86	P02-0408500	SENSOR ADJUSTMENT BLOCK	1
87	P01-0670700	SENSOR FIX PLATE	1

8.5 WASTE FILM WINDER (OPTIONAL)





WASTE FILM WINDER PART LIST FOR EKL-145E

KEY NO	PART NO	DESCRIPTION	Q'TY
1	P01-0674900	MOTOR END COVER	1
2	P0501-0021200	GEAR REDUCER MOTOR	1
3	P02-0407600	DRIVING SHAFT	1
4	P01-0671800	SENSOR FIX PLATE	1
5		SUPPORT SEAT	1
7	P01-0672100	SENSOR PLATE	1
8	P02-0408900	GUIDE ROLLER SHAFT	1
9	P06-0024300	GUIDE ROLLER	1
10	P01-0673000	BRACKET	1
11	P01-0672600	PIVOT ARM	1
12	P01-0674000	WASHER	5
13	P1104-026203ZZ0	BEARING 6203ZZ(CWB)	1
14	P02-0001900	BEARING SEAT	1
15		BACKPLATE	1
16	P02-0407700	WASTE FILM CORE	1
17	P01-0671900	SPACER (INNER)	1
18		FRONTPLATE	1
19	P01-0604000	SPACER (OUTER)	1
20	P1113-0000300	KNOB	1